

Calgary Foothills Primary Care Network

Extended Health Team: Medical MSK Mgmt Stream

Joe Kwan, Pharmacist, Extended Team Manager
Corinne Bryant, OT(C), Extended Team Lead

Objectives

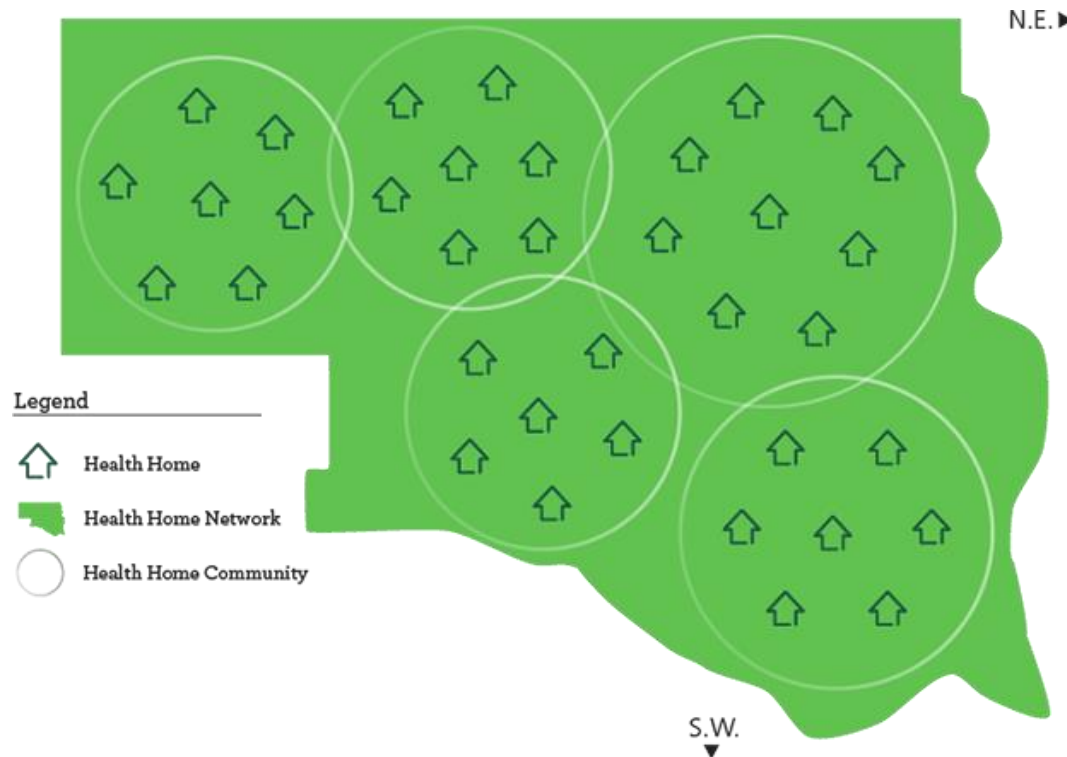
- What are PCN's?
- Partnership with AHS Division of Rheumatology
- Primary Care Model of Osteoarthritis management
- Capacity building in the Medical Home

Primary Care Networks (PCN)

- Alberta's solution to Primary Care Reform
- Fill gaps in health care
- Multidisciplinary Teams
- Support Medical Home

Calgary Foothills Primary Care Network

- Large PCN – over 400 physicians in NW Calgary & Cochrane
- Panel size ~ 360,000 patients



Medical MSK Mgmt Stream

- 2010 - partnership with Division of Rheumatology
- Collaboration with Medical Home
- 1 day weekly clinic
- Biopsychosocial model & holistic approach
- Consider clinical question & patient goals
- Interdisciplinary team includes:



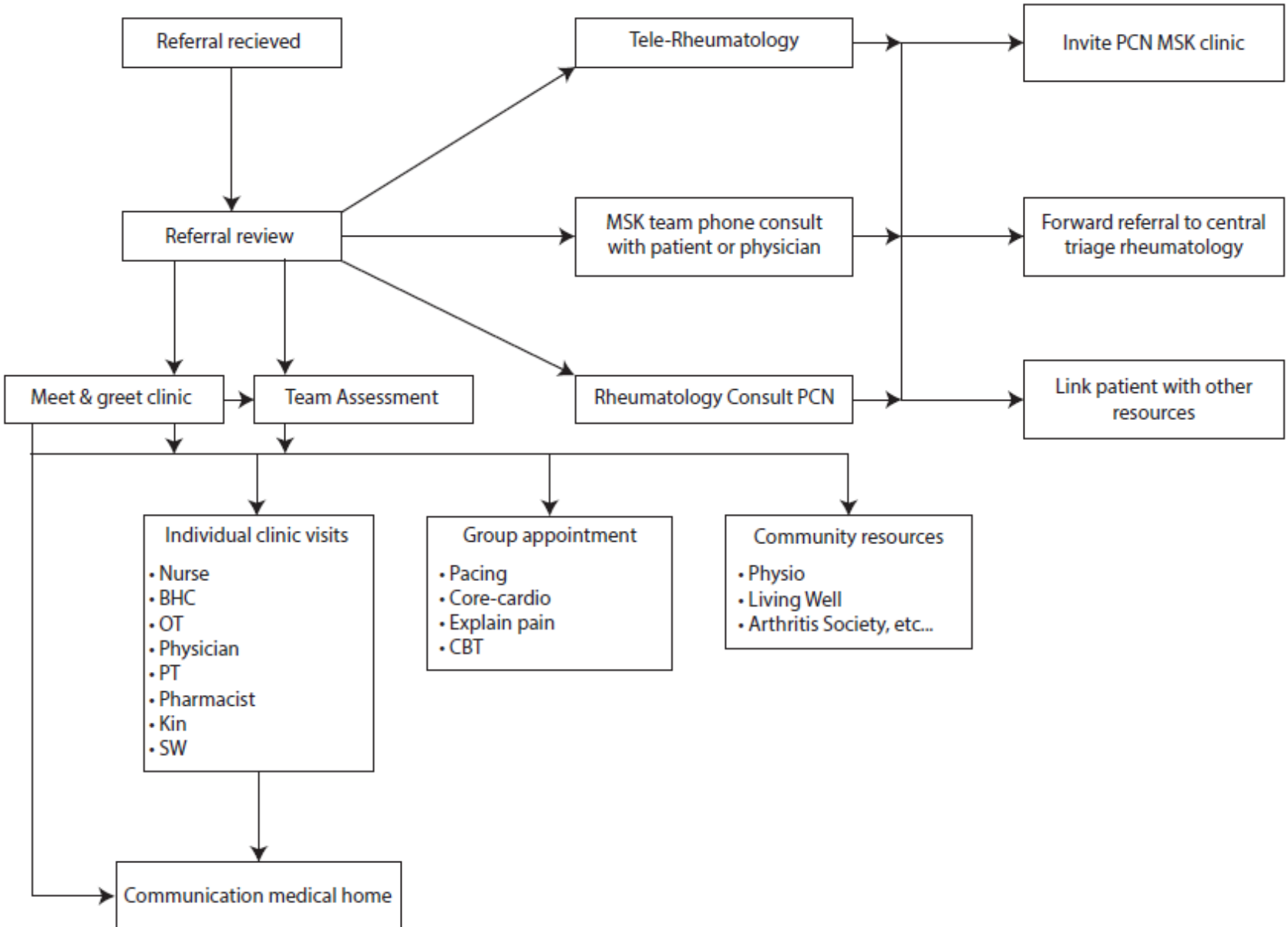
- Primary care physicians
- Health Management Nurse
- Pharmacist
- Mental Health Therapist
- Social worker
- Dietitian
- Occupational therapist
- Physiotherapist
- Kinesiologist

Capacity Building in Primary Care: Rheumatology Specialist Linkage

- Specialist knowledge & skills to primary care level:
 - Within Medical MSK Mgmt Stream
 - Mentorship in clinic
 - Guidance in patient rounds
 - Assistance with team in patient care
 - Within Primary Care Medical Home
 - MSK Lunch & Learn
 - Tele-Rheumatology (non-urgent) consult service
 - CME education events

MSK Stream

July 2013



MSK within Extended Health Team

- 5 Streams with Specialty Linkages:
 - Chronic Pain Stream ↔ Calgary Chronic Pain Center
 - Navigation Stream ↔ Geriatrician & Geriatric Psychiatrist
 - MSK Stream ↔ Division of Rheumatology
 - GI Stream ↔ Division of Gastroenterology
 - Mental Health Stream ↔ Adult Psychiatry

Demographics in the Medical MSK Mgmt Stream – 2014/15

- 344 referrals received in Medical MSK Stream
- 75% were female
- Reasons for referral
 - Combined single/multiple joint pain 23%
 - Back pain 16%
 - Osteoarthritis 13%
 - Fibromyalgia 5%

Results

- Annual Physician Survey Results (2015 - n=213):
 - 55% of physicians have referred to the program
 - 84% of them agreed that this program has helped their patients manage their health concerns
 - 56% of them agreed they learned something new from the program that will help them manage other patients in their practice with similar health issues.

Summary

It's all about capacity building!

Within primary care through our specialist linkages

With the patient through our interdisciplinary team approach & collaboration with their Medical Home

Questions

